

FINISH SCHEDULE					
SPACES	FLOORS	BASES	WALLS	CEILING	NOTES
SALES	POLISHED CONCRETE ENTRY CARPET TILE	4" VINYL	GWB-PAINT YELLOW /FRP	ACT	2,3,4,5,7,9,11,13
STOCK ROOM	CONCRETE	-	GWB	-	2,9
EMPLOYEE AREA	CONCRETE	-	GWB / PLYWOOD	-	5,12
OFFICE	POLISHED CONCRETE	4" VINYL	GWB - PAINT WHITE	-	2,3,4,5,7,8
TOILET	SHEET VINYL	6" SHEET VINYL	FRP	GWB - PAINT WHITE	4,5,6,7,9,10
HALLWAY	POLISHED CONCRETE	4" VINYL	GWB-PAINT WHITE /FRP	ACT	2,3,5,9,11
VESTIBULE	ENTRY CARPET TILE	-	STOREFRONT	ACT	1,5,11

- FINISH NOTES:**
- CARPET TILE- MANUFACTURED BY INTERFACE FLOORING SYSTEMS AND SUPPLIED BY DOLLAR TREE. INSTALL TILES QUATER TURNED AND PER DOLLAR TREE'S CRITERIA. ENTRY TILE: DECO RIB, STYLE #678609900. CONTRACTOR SHALL PREPARE FLOOR SURFACE AND COORDINATE CRPET INSTALLATION W/ CARPET INSTALLER.
 - VINYL COVE BASE- COLOR-BLACK. (VINL BASE ONLY ON EXPOSED WALLS NOT COVERED BY GONOLAS IN SALES AREA) VINYL COVE BASE TO BE LOCATED IN STOCKROOM AT MOP SINK AND CABINET ONLY UON.
 - POLISHED CONCRETE FLOOR ON SALES FLOOR AND OFFICE. POLISHED CONCRETE FLOOR BY DOLLAR TREE'S VENDOR. COORDINATE WITH DOLLAR TREE.
 - SLATWALL: 3/4" SLATWALL WITH WHITE MELAMINE FINISH. SEE MANUFACTURER'S DRAWINGS FOR INSTALLATION DETAILS.
 - PAINT COLORS ARE AS FOLLOWS:
 WHITE - SHERWIN WILLIAMS PRO 200 LATEX SEMI-GLOSS WHITE W/B-1 PER GALLON.
 YELLOW- BENJAMIN MOORE PRODUCT 274 "LEMON SORBET" #2019-60 (EGGSHELL FINISH)
 FOREST GREEN- BENJAMIN MOORE PRODUCT 274 "FOREST GREEN" #2047-10 (EGGSHELL FINISH)
 GRAY- "ROCKY RIVER" #5W6215 SHERWIN WILLIAMS (SEMI GLOSS)
 - PAINT TOILET ROOM EXTERIOR WALLS WHITE.
 - SLATWALL SHALL BE PROVIDED BY DOLLAR TREE AND INSTALLED BY CONTRACTOR. ALL OTHER FINISHES SHALL BE PROVIDED AND INSTALLED BY CONTRACTOR.
 - PROVIDE PREFORMED COUNTER WITH WHITE HIGH PRESSURE LAMINATE FINISH. MOUNT TO WALLS. FILING CABINETS PROVIDED BY DOLLAR TREE. SEE ENLARGED OFFICE PLAN AND OFFICE ELEVATION.
 - FRP (FIBERGLASS REINFORCED PANEL): IN TOILET ROOM FROM 6 1/2" AFF TO 8'-0" AFF SHALL BE WHITE" COLOR (IN STOCKROOM BEHIND MOP SINK/UTILITY CABINET ONLY, IN HALLWAY BEHIND DRINKING FOUNTAIN ONLY FRP GOES FROM FINISHED FLOOR.) FRP ON SALES FLOOR (WHERE NOTES ON PLANS/ELEVATIONS) SHALL BE ALMOND COLOR WITH "J" CHANNEL TRIM CAP AND "H" CHANNEL PANEL CONNECTORS.
 - SHEET VINYL: CLASSIC CORLON SERIES MANUFACTURED BY ARMSTRONG-CONNECTION CORLON "PORCELAIN" #88724 OR EQUAL. SHEET VINYL BASE: BY INTREGAL, 3/8" RADIUS, 6" HIGH COVED BASE W/ COVE STICK AND EXTRUDED ALUMINUM CAP TRIM.
 - PROVIDE 2'-0" X 4'-0" CEILING TILE BY ARMSTRONG "CORTEGA" SQUARE LAY-IN #769, WHITE, IN A WHITE METAL GRID. (IN AREAS WITH SIGNIFICANT AIR PRESSURE DIFFERENTIALS PROVIDE RETENTION CLIPS TO RETAIN PANELS IN PLACE.)
 - PAINT EMPLOYEE AREA WALLS TO 4'-0" AFF "FOREST GREEN".
 - SALES AREA TO RECEIVE LEVEL 5 FINISH. PROVIDE FINISH TO 1'-0" BEHIND FREEZER/COOLER AND GONDOLA, TO FINISHED FLOOR EVERYWHERE ELSE. CONTRACTOR SHALL ALLOW 72 HOUR CURE TIME.



OFFICE: 312.207.0501
 FAX: 312.284.6100
 INFO@PMPARCH.COM
 PMPARCH.COM
 527 S. Wells St. Suite 402
 Chicago, IL 60607

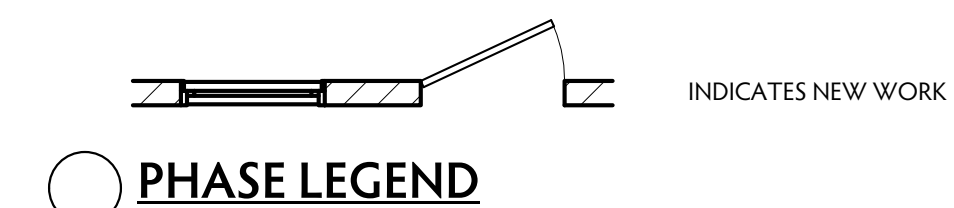
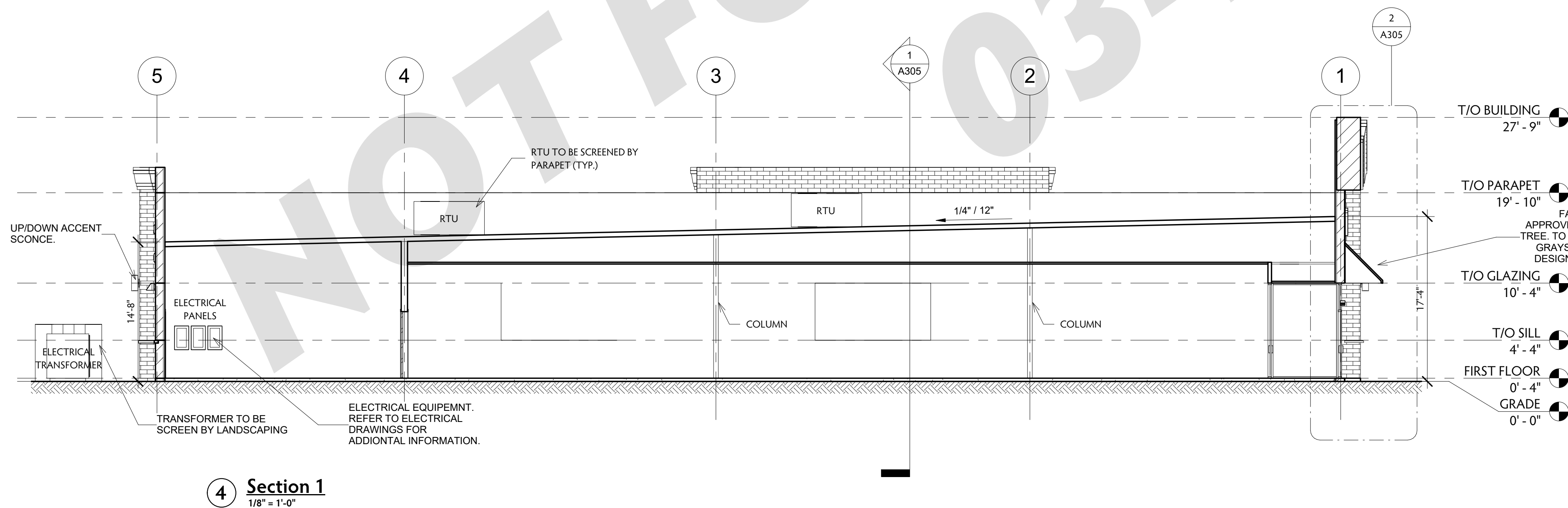
REVISIONS

NO.	DATE	DESCRIPTION
2	03-13-2018	CLARIFICATION
	03-27-2018	UPDATE

WALL LEGEND

TYPE MARK	DESCRIPTION
	PARTITION WALL: 4" (20 GA) METAL STUDS @16" OC WITH ONE LAYER 5/8" GWB EACH SIDE. SEE STRUCTURAL DETAILS FOR ADDITIONAL REQUIREMENTS AND BRACING. FINISH PER FINISH SCHEDULE, SHEET AS1.4 (PLUMBING WALLS ON INTERIOR OF TOILETS SHALL HAVE WATER RESISTANT GWB.)
	PARTITION WALL: 3 5/8" (20 GA) METAL STUDS @16" OC WITH ONE LAYER 5/8" GWB EACH SIDE. SEE STRUCTURAL DETAILS FOR ADDITIONAL REQUIREMENTS AND BRACING. FINISH PER FINISH SCHEDULE, SHEET AS1.4 (PLUMBING WALLS ON INTERIOR OF TOILETS SHALL HAVE WATER RESISTANT GWB.)

- NOTE:**
- INTERIOR WALLS AND PARTITIONS SHALL BE CONSTRUCTED TO RESIST A MINIMUM 5 PSF LATERAL LOAD OR FOR DESIGNED IMPOSED LOADS. IBC 1607.13.
 - FINISH PER FINISH SCHEDULE SHEET A401



DRAWN BY: ALI
 CHECKED BY: JON
 ISSUED: 3/27/2018 5:05:17 PM

DOLLAR TREE,
 GRAYSLAKE, IL 60030

PERMIT #:

FLOOR PLANS

A300